

1



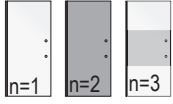
Arrow Scandinavien AB
Tel: +46 (0)31 330 00 10
www.arrowshower.com



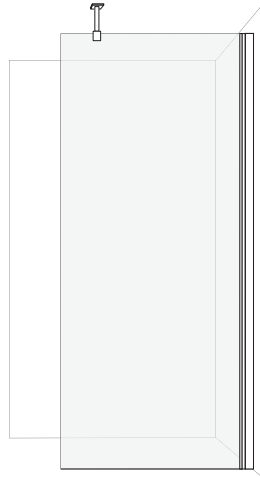
Denna produkt är anpassad till
Branschregler SÄKER VÄTTEN-installation.
Arrow garanterar produktens funktion
om branschreglerna och monterings-
anvisningarna följs.

WALL

(UK) Installation manual for shower walls WALL
(SE) Installationsmanual för duschväggarna WALL



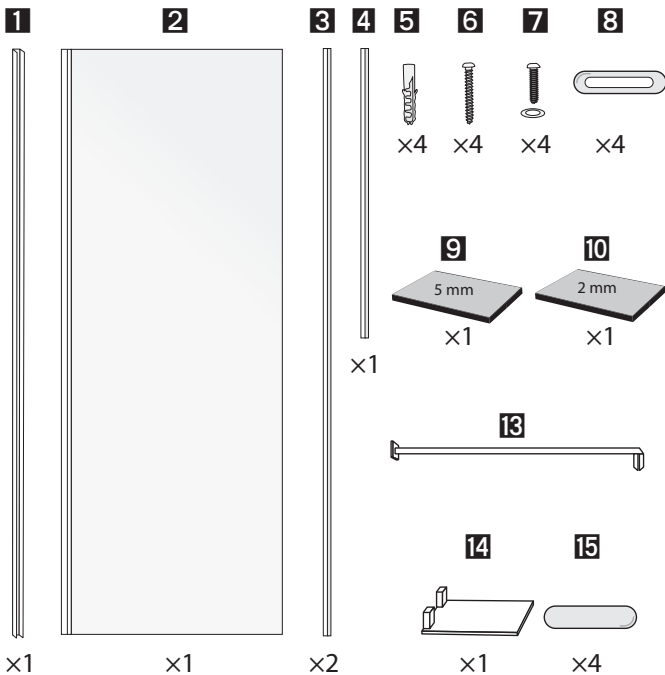
WALL #		
522n-70	700 mm	660-685 mm
522n-80	800 mm	760-785 mm
522n-90	900 mm	860-885 mm
522n-100	1000 mm	960-985 mm



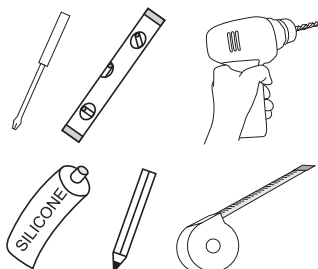
2



WALL



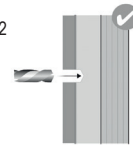
(UK) You also need (not included)...
(SE) Du behöver även (ingår ej)...



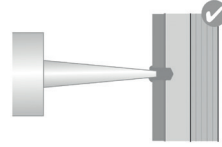
3

(UK) How to drill/screw
(SE) Hur du bör borra/skruva.

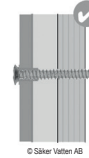
(UK) Wet area wall
(SE) Våtrumsvägg 2012



(UK) 1. Only drill through surface and waterproofing
(SE) 1. Borra bara genom yt- och tätskiktet

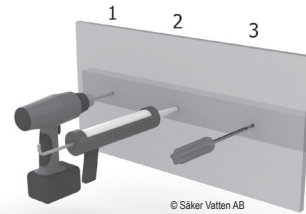


(UK) 2. Fill the drillhole with sealant
(SE) 2. Fyll hela borrhålet med tätmassa

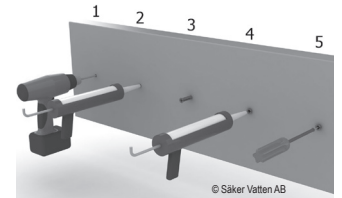


(UK) 3. Tighten the screw until it attaches to the plywood
(SE) 3. Skruva så att skruven fäster i plywooden

(UK) Wall with beams
(SE) Vägg med regler

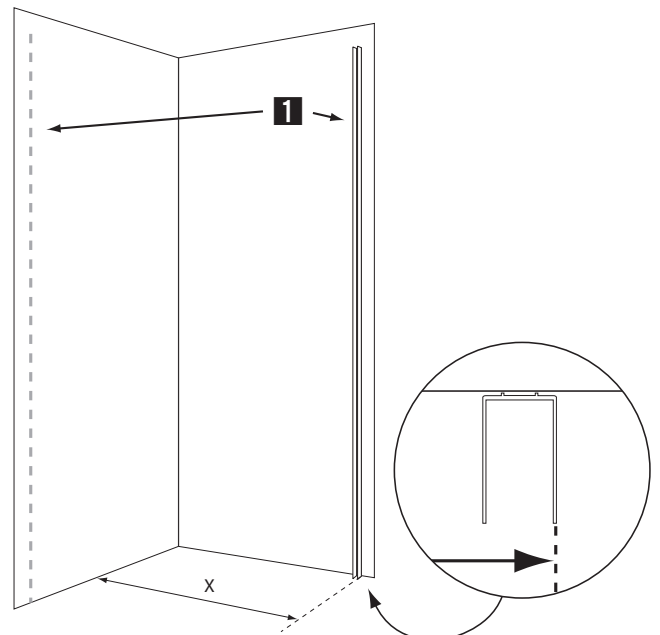


(UK) Concrete wall
(SE) Betongvägg



4

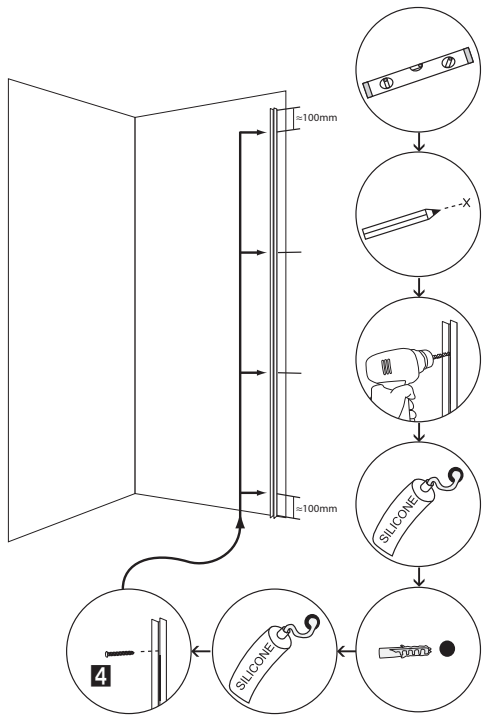
(UK) X: This shower wall can be mounted at any distance from the opposite wall. It is only the length of the supporting stay that is limiting.
(SE) X: Denna duschvägg kan monteras på valfritt avstånd från motstående vägg. Det är enbart det stabiliserande stagets längd som är begränsande.



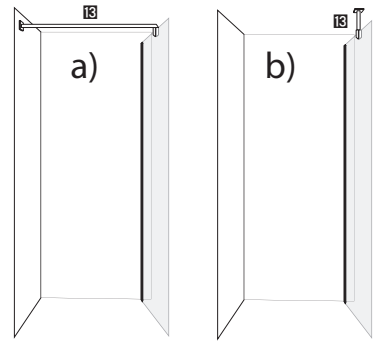
5

(UK) Screw fixing points must be in solid construction, such as concrete, beams, special construction detail or wet area wall. See image [3].

(SE) Skruvfästningarna ska göras i massiv konstruktion såsom betong, reglar, särskild konstruktionsdetalj eller i Våtrumsvägg 2012. Se bild [3].



8

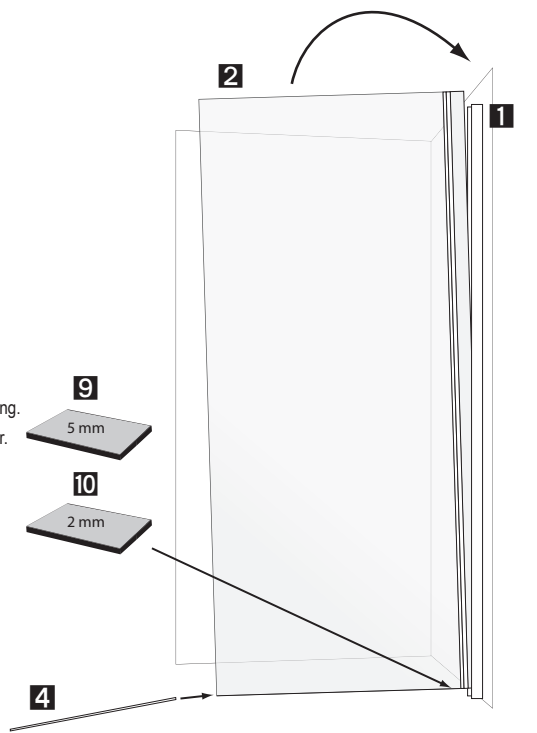


(UK) If needed, cut the supporting stay with a metal saw. Note: Only cut the end pointing towards the wall/ceiling.

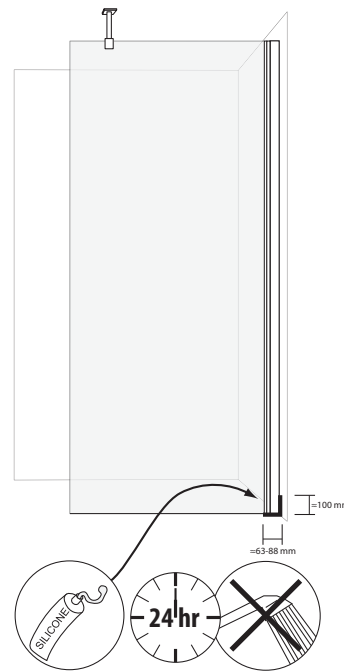
(SE) Vid behov, kapa staget till önskad längd med en metallsåg. Obs! Kapa enbart i den ände som är mot väggen/taket.

6

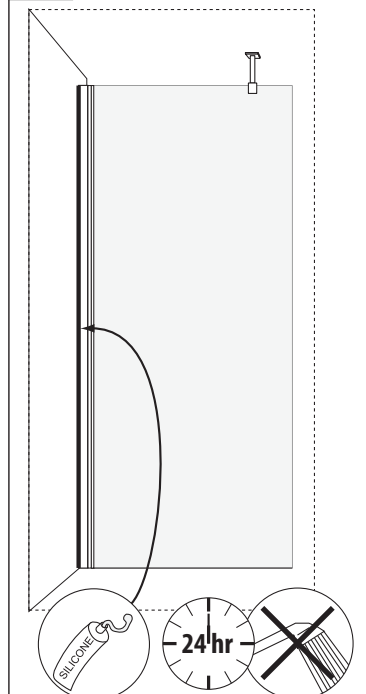
(UK) If floor is slanting.
(SE) Om golvet lutar.



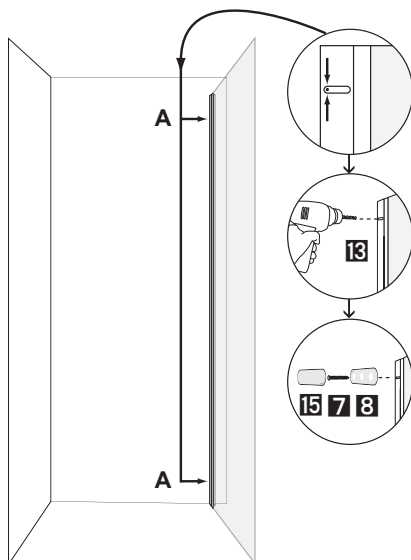
9



10



7



11

